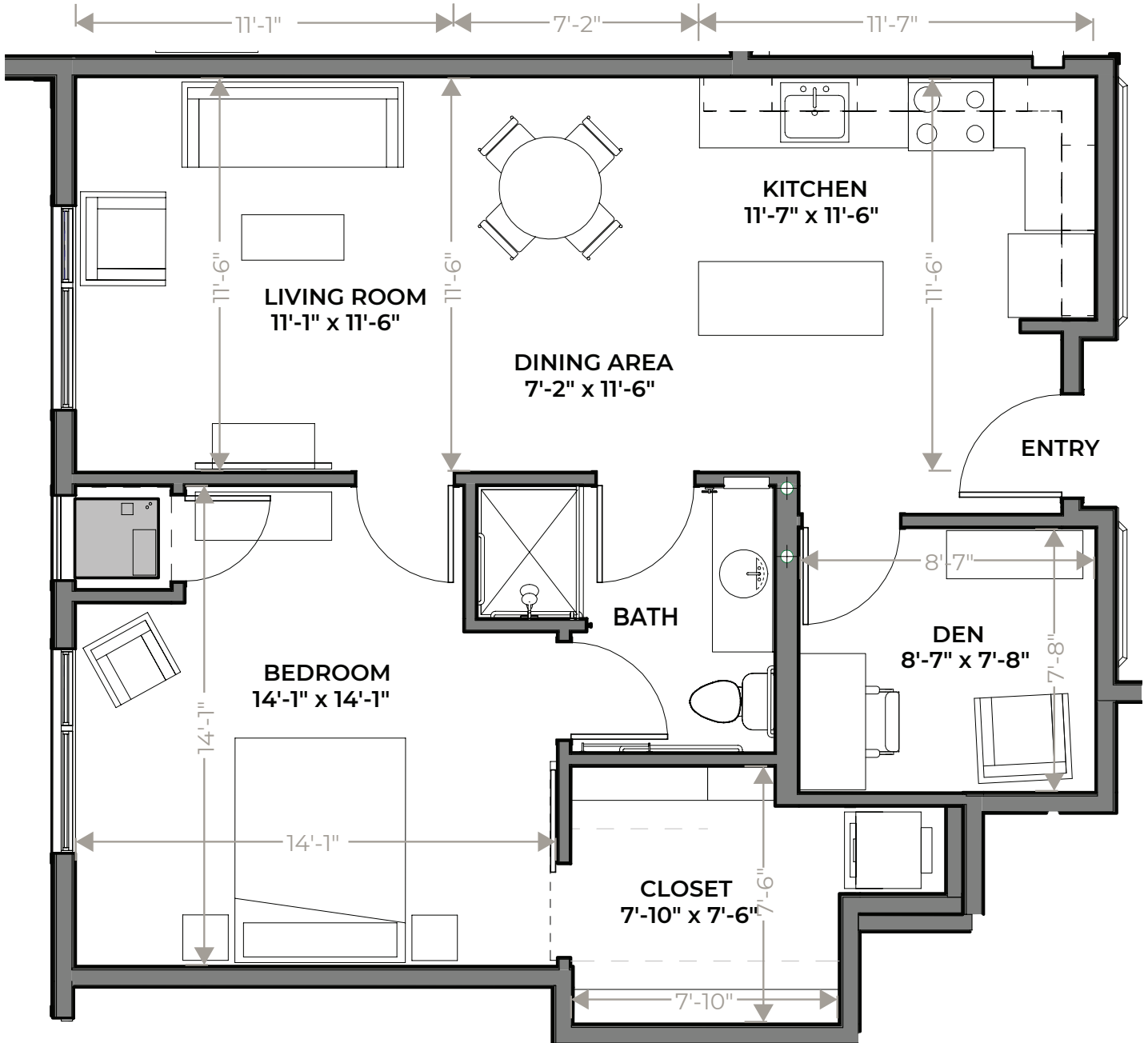


A SENIOR LIVING

797 Sq. Ft.
1 Bed + Den

202, 302, 402, 502

Marseille



Dimensions and square footage may vary

ENJOY LIFE JUST A LITTLE BIT MORE.

GLOBAL POINTE
SENIOR LIVING

5200 Wayzata Blvd.
Golden Valley, MN 55416

763.235.3468
GlobalPointeSeniorLiving.com